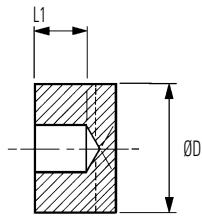
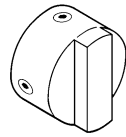


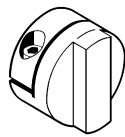
Brass / Aluminium Blind Hubs



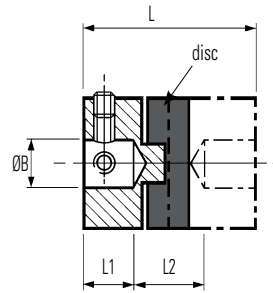
Controlled bore depth L1 provides a register when pre-assembling hubs to shafts



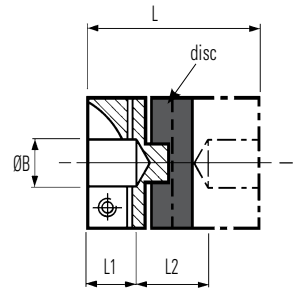
Set screw style



Clamp style



Refs. 232
Set screw style



Refs. 234
Clamp style

DIMENSIONS & ORDER CODES

Coupling Type and Size	Hub Ref		Dimensions								Fasteners			Disc Ref	
	Set Screw Style	Clamp Style	ØD mm	L mm	^① L1 mm	^② L2 mm	ØB1 Max mm	^④ Moment of Inertia kgm ² x10 ⁻⁸	^④ Mass kg x10 ⁻³	Size	^③ Torque Nm	Wrench mm	Acetal (black) Std.	Nylon 11 (Natural)	
Blind Hubs	06	232.06	-	6.4	12.7	3.8	5.1	3.18	6	2.5	M3	0.9	1.5	236.06	238.06
	09	232.09	-	9.5	12.7	3.8	5.1	5	18	4	M3	0.9	1.5	236.09	238.09
	13	232.13	-	12.7	15.9	4.3	7.3	6.35	26	11	M3	0.9	1.5	236.13	238.13
	19	232.19	-	19.1	22.0	6.3	9.4	8	67	12	M3	0.9	1.5	236.19	238.19
	-	234.19	M2.5								1.3	2.0			
	25	232.25	-	25.4	28.4	8.6	11.2	12	252	31	M4	2.2	2.0	236.25	238.25
	-	234.25	M3								2.4	2.5			
	33	232.33	-	33.3	42.0	13.0	16.0	16	1074	72	M5	4.6	1.5	836.33	838.33
-	234.33	M4	2.3								2.0				
41	232.41	-	41.3	50.8	16.7	17.4	20	3327	148	M5	4.6	2.5	236.41	238.41	
-	234.41	M4								5.6	3.0				

PERFORMANCE (AT 20°C WITH STANDARD ACETAL DISC)

Coupling Size	^⑤ Peak torque Nm	^⑥ Max compensation @ 3000 rpm			^⑦ Torsional		Static break torque Nm
		Angular deg	Radial mm	Axial ± mm	Rate deg / Nm	Stiffness Nm / rad	
06	0.06	0.5	0.1	0.05	5.7	10	0.7
09	0.21		0.1	0.05	1.9	30	2
13	0.5		0.1	0.05	0.88	65	4
19	1.7		0.2	0.1	0.50	115	8
25	4		0.2	0.1	0.28	205	13
33	9		0.2	0.15	0.093	615	53
41	17		0.25	0.15	0.048	1200	57

Materials & Finishes

Hubs sizes 06 to 13: Brass Cu Zn 21 Si 3P (Lead Free)

Hub sizes 19 to 41: Al Alloy 2014 T6 or 6026 LF

Fasteners: Alloy steel, black oiled

Hub sizes 19 to 41: Iridite NCP finish

IMPORTANT

Load capacity depends on application conditions:
see page 4 for details

STANDARD BORES FOR ALL TYPES

Coupling Size	ØB1, ØB2 +0.03mm/-0mm (+0.0012/ -0)																							
	2	3 (1/8")	4 (3/16")	5	6 (1/4")	8 (3/8")	10 (1/2")	12 (5/8")	14	15	16 (5/8")	18	19 (3/4")	20	24	25	30							
06	•	•	•																					
09		•	•	•	•																			
13		•	•	•	•	•																		
19			•	•	•	•	•																	
25					•	•	•	•																
33						•	•	•	•	•	•	•	•											
41							•	•	•	•	•	•	•	•	•	•	•							
Bore ref.	11	14	16	18	19	20	22	24	28	31	32	35	36	38	40	41	42	45	46	47	48	51	52	56