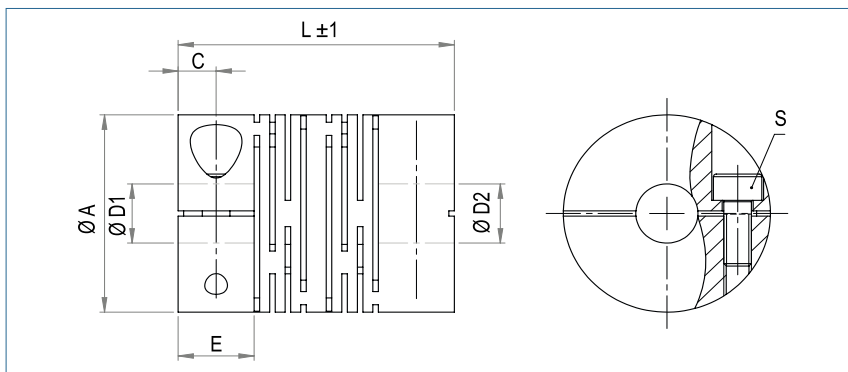


Slit Coupling

with collet clamps



Order Code

KBFK / 30 - 8 - 12 - AL

Type / Size

ØD1
(H7)

ØD2
(H7)

Material

Size	Torque TKN (Nm) AL	Torque TKN (Nm) VA	Dimensions (mm)						Technical Data										
			L	Ø A	D1/D2		E	C	S	Mass (g) AL	Mass (g) VA	Moment of Inertia J AL (g m ²)	Moment of Inertia J VA (g m ²)	Spring Stiffness		Misalignment			max speed min-1
			Length	Outer Ø	Bore Size (H7) min-max			Screw (ISO4762) TA (Nm)	torsional CT 10° (Nm/rad) AL					torsional CT 10° (Nm/rad) VA	radial ΔKr (mm)	axial ΔKa (mm)	angular ΔKw (°)		
16	3	6	23	16	3-6	7	3.5	M2.5x6 1	10	26	0.00028	0.00080	0.076	0.513	0.15	0.5	2.0	10000	
18	3	6	16.6	18	3-6	5	2.5	M2.5x8 1	10	24	0.00045	0.00099	0.103	0.752	0.15	0.5	2.0	10000	
20	5	12	28	20	3-8	8	4	M3x8 1.5	20	50	0.00095	0.00288	0.407	1.189	0.1	1	1.0	9500	
22	3	6	20	22	3-10	5.5	2.75	M2.5x8 1	18	40	0.00115	0.00260	0.690	1.372	0.15	1	1.0	9500	
25	7	16	28	25	6-12	8	4	M3x10 1.5	30	75	0.00239	0.00648	0.733	1.558	0.1	1	1.0	8000	
30	10	25	40	30	6-14	11	5.5	M4x10 3.4	60	160	0.00680	0.01920	0.868	2.530	0.1	0.85	1.0	6000	
40	19	36	48	40	6-19	11	5.5	M5x14 7	120	340	0.02790	0.07580	3.767	11.008	0.15	0.85	1.0	5000	
50	35	73	65	50	10-26	19	9.5	M6x16 14	250	710	0.08970	0.24600	7.196	20.995	0.15	0.7	1.5	5000	
60	70	110	80	60	10-30	25	12.5	M8x18 27	500	1340	0.23200	0.64800	12.750	37.165	0.15	0.7	1.5	4500	
70	130	190	95	70	15-35	25	12.5	M8x25 27	750	2050	0.50660	1.39200	66.768	196.024	0.1	0.33	1.0	4000	
80	180	240	100	80	20-40	25	12.5	M8x30 27	1000	2730	0.89010	2.48550	78.189	229.524	0.1	0.33	1.0	3500	



Material coupling: aluminium or stainless steel

Hub bore tolerance: H7

Keyway Only available for equal bore diameters – please contact our technical department

Special material on request.