

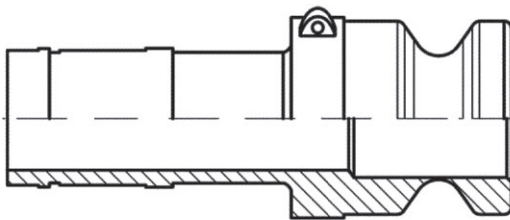


## KAMLOK CSATLAKOZÓK KAMLOK COUPLINGS

### Technikai információk Technical information



#### Alapanyagok és gyári tömítések táblázata Material and seal summary table



| Csatlakozó alapanyag<br>Coupling material                                    | Tömítés<br>Seal | Hőmérséklet<br>Temperature |
|--|-----------------|----------------------------|
| Alumínium - ASG7<br>Aluminium  | NBR             | -30°C – +120°C             |
| Rozsdamentes acél - AISI 316<br>Stainless steel                              | NBR             | -30°C – +120°C             |
| Polipropilén - 25–30% üvegszállal<br>Polypropylene - with 25–30% glass fibre | EPDM            | -40°C – +145°C             |
| Réz - ASTM BS84<br>Brass   | NBR             | -30°C – +120°C             |
| Bronz<br>Bronze  | NBR             | -30°C – +120°C             |

Ezen felül szállítható tömítések: FKM (Viton®), CSM (Hypalon®), Szilikon, PTFE, PU  
Other seal types are available on request: FKM (Viton), CSM (Hypalon), Silicone, PTFE, PU

A Kamlok csatlakozót, a legelterjedtebb és legismertebb csatlakozók egyikét Amerikában fejlesztették ki, az amerikai katonai Mil-C-27487 szabvány szerint. Ezt a szabványt a Mil-A-A-59326A norma váltotta fel 1999-ben. Az MCC gyár csatlakozói megfelelnek az európai szabványnak is: EN 14420-7.

Kamlok coupling; the most common and mostly used coupling system in the world was developed in the USA according to the US military norm Mil-C-27487. This norm was replaced by the Federal Mil-A-A-59326A norm in 1999. All parts manufactured by MCC exceeds also the requirements of the European standard: EN 14420-7.

#### Üzemi nyomás összefoglaló táblázat Working pressure summary table

| Névleges átmérő<br>Nominal diameter | Menet<br>Thread | Alumínium<br>Aluminium | Rozsdamentes acél<br>Stainless steel | Polipropilén<br>Polypropylene | Réz<br>Brass |
|-------------------------------------|-----------------|------------------------|--------------------------------------|-------------------------------|--------------|
| (mm)                                | (")             | (bar)                  |                                      |                               |              |
| 13                                  | G 1/2           | 10                     | 10                                   | -                             | 10           |
| 19                                  | G 3/4           | 17                     | 17                                   | 8,5                           | 17           |
| 25                                  | G 1             | 17                     | 17                                   | 8,5                           | 17           |
| 32                                  | G 1.1/4         | 17                     | 17                                   | 6,5                           | 17           |
| 38                                  | G 1.1/2         | 17                     | 17                                   | 6,5                           | 17           |
| 50                                  | G 2             | 17                     | 17                                   | 6,5                           | 17           |
| 63                                  | G 2.1/2         | 10                     | 10                                   | -                             | 10           |
| 75                                  | G 3             | 8,5                    | 8,5                                  | 5                             | 8,5          |
| 100                                 | G 4             | 6,5                    | 6,5                                  | 5                             | 6,5          |

## KAMLOK CSATLAKOZÓ – A-TÍPUS: APA CSATLAKOZÓ BELSŐ MENETTEL KAMLOK COUPLING – A-TYPE: MALE ADAPTER WITH FEMALE THREAD



| Cikkszám<br>Code |            |            |             | Méret<br>Dimension | Menet<br>Thread |
|------------------|------------|------------|-------------|--------------------|-----------------|
| AL               | SS         | PP         | Réz / Brass | DN                 | (")             |
| 64.019.001       | 64.036.001 | 64.028.001 | 64.133.001  | 15                 | 1/2             |
| 64.019.002       | 64.036.002 | 64.028.002 | 64.133.002  | 20                 | 3/4             |
| 64.019.003       | 64.036.003 | 64.028.003 | 64.133.003  | 25                 | 1               |
| 64.019.004       | 64.036.004 | 64.028.004 | 64.133.004  | 32                 | 1.1/4           |
| 64.019.005       | 64.036.005 | 64.028.005 | 64.133.005  | 40                 | 1.1/2           |
| 64.019.006       | 64.036.006 | 64.028.006 | 64.133.006  | 50                 | 2               |
| 64.019.007       | 64.036.007 | -          | 64.133.007  | 65                 | 2.1/2           |
| 64.019.008       | 64.036.008 | 64.028.007 | 64.133.008  | 80                 | 3               |
| 64.019.009       | 64.036.009 | 64.028.008 | 64.133.009  | 100                | 4               |

## KAMLOK CSATLAKOZÓ – B-TÍPUS: ANYA CSATLAKOZÓ KÜLSŐ MENETTEL KAMLOK COUPLING – B-TYPE: FEMALE ADAPTER WITH MALE THREAD



| Cikkszám<br>Code |            |            |             | Méret<br>Dimension | Menet<br>Thread |
|------------------|------------|------------|-------------|--------------------|-----------------|
| AL               | SS         | PP         | Réz / Brass | DN                 | (")             |
| 64.020.001       | 64.037.001 | 64.029.001 | 64.134.001  | 15                 | 1/2             |
| 64.020.002       | 64.037.002 | 64.029.002 | 64.134.002  | 20                 | 3/4             |
| 64.020.003       | 64.037.003 | 64.029.003 | 64.134.003  | 25                 | 1               |
| 64.020.004       | 64.037.004 | 64.029.004 | 64.134.004  | 32                 | 1.1/4           |
| 64.020.005       | 64.037.005 | 64.029.005 | 64.134.005  | 40                 | 1.1/2           |
| 64.020.006       | 64.037.006 | 64.029.006 | 64.134.006  | 50                 | 2               |
| 64.020.007       | 64.037.007 | -          | 64.134.007  | 65                 | 2.1/2           |
| 64.020.008       | 64.037.008 | 64.029.007 | 64.134.008  | 80                 | 3               |
| 64.020.009       | 62.000.516 | 64.029.008 | 64.134.009  | 100                | 4               |

## KAMLOK CSATLAKOZÓ – C-TÍPUS: ANYA CSATLAKOZÓ TÖMLŐCSONKKAL KAMLOK COUPLING – C-TYPE: FEMALE ADAPTER WITH HOSE SHANK



| Cikkszám<br>Code |            |            |             | Méret<br>Dimension | Tömlőcsonk átmérő<br>Hose shank diameter |
|------------------|------------|------------|-------------|--------------------|--|
| AL               | SS         | PP         | Réz / Brass | DN                 | (mm)                                     |
| 64.021.001       | 64.038.001 | 64.030.001 | 64.135.001  | 15                 | 13                                       |
| 64.021.002       | 64.038.002 | 64.030.002 | 64.135.002  | 20                 | 21                                       |
| 64.021.003       | 64.038.003 | 64.030.003 | 64.135.003  | 25                 | 27                                       |
| 64.021.004       | 64.038.004 | 64.030.004 | 64.135.004  | 32                 | 34                                       |
| 64.021.005       | 64.038.005 | 64.030.005 | 64.135.005  | 40                 | 40                                       |
| 64.021.006       | 64.038.006 | 64.030.006 | 64.135.006  | 50                 | 51                                       |
| 64.021.007       | 64.038.007 | -          | 64.135.007  | 65                 | 64                                       |
| 64.021.008       | 64.038.008 | 64.030.007 | 64.135.008  | 80                 | 76                                       |
| 64.021.009       | 64.038.009 | 64.030.008 | 64.135.009  | 100                | 103                                      |

## KAMLOK CSATLAKOZÓ – D-TÍPUS: ANYA CSATLAKOZÓ BELSŐ MENETTEL KAMLOK COUPLING – D-TYPE: FEMALE ADAPTER WITH FEMALE THREAD



| Cikkszám<br>Code |            |            |             | Méret<br>Dimension | Menet<br>Thread |
|------------------|------------|------------|-------------|--------------------|-----------------|
| AL               | SS         | PP         | Réz / Brass | DN                 | (")             |
| 64.022.001       | 64.039.001 | 64.031.001 | 64.136.001  | 15                 | 1/2             |
| 64.022.002       | 64.039.002 | 64.031.002 | 64.136.002  | 20                 | 3/4             |
| 64.022.003       | 64.039.003 | 64.031.003 | 64.136.003  | 25                 | 1               |
| 64.022.004       | 64.039.004 | 64.031.004 | 64.136.004  | 32                 | 1.1/4           |
| 64.022.005       | 64.039.005 | 64.031.005 | 64.136.005  | 40                 | 1.1/2           |
| 64.022.006       | 64.039.006 | 64.031.006 | 64.136.006  | 50                 | 2               |
| 64.022.007       | 64.039.007 | -          | 64.136.007  | 65                 | 2.1/2           |
| 64.022.008       | 64.039.008 | 64.031.007 | 64.136.008  | 80                 | 3               |
| 64.022.009       | 62.000.517 | 64.031.008 | 64.136.009  | 100                | 4               |

## KAMLOK CSATLAKOZÓ – E-TÍPUS: APA CSATLAKOZÓ TÖMLŐCSONKKAL KAMLOK COUPLING – E-TYPE: MALE ADAPTER WITH HOSE SHANK



| Cikkszám<br>Code |            |            |             | Méret<br>Dimension | Tömlőcsonk átmérő<br>Hose shank diameter |
|------------------|------------|------------|-------------|--------------------|--|
| AL               | SS         | PP         | Réz / Brass | DN                 | (mm)                                     |
| 64.023.001       | 64.040.001 | 64.032.001 | 64.137.001  | 15                 | 13                                       |
| 64.023.002       | 64.040.002 | 64.032.002 | 64.137.002  | 20                 | 21                                       |
| 64.023.003       | 64.040.003 | 64.032.003 | 64.137.003  | 25                 | 27                                       |
| 64.023.004       | 64.040.004 | 64.032.004 | 64.137.004  | 32                 | 34                                       |
| 64.023.005       | 64.040.005 | 64.032.005 | 64.137.005  | 40                 | 40                                       |
| 64.023.006       | 64.040.006 | 64.032.006 | 64.137.006  | 50                 | 51                                       |
| 64.023.007       | 64.040.007 | -          | 64.137.007  | 65                 | 64                                       |
| 64.023.008       | 64.040.008 | 64.032.007 | 64.137.008  | 80                 | 76                                       |
| 64.023.009       | 64.040.009 | 64.032.008 | 64.137.009  | 100                | 103                                      |

## KAMLOK CSATLAKOZÓ – F-TÍPUS: APA CSATLAKOZÓ KÜLSŐ MENETTEL KAMLOK COUPLING – F-TYPE: MALE ADAPTER WITH MALE THREAD



| Cikkszám<br>Code |            |            |             | Méret<br>Dimension | Menet<br>Thread |
|------------------|------------|------------|-------------|--------------------|-----------------|
| AL               | SS         | PP         | Réz / Brass | DN                 | (")             |
| 64.024.001       | 64.040.010 | 64.033.001 | 64.138.001  | 15                 | 1/2             |
| 64.024.002       | 64.041.001 | 64.033.002 | 64.138.002  | 20                 | 3/4             |
| 64.024.003       | 64.041.002 | 64.033.003 | 64.138.003  | 25                 | 1               |
| 64.024.004       | 64.041.003 | 64.033.004 | 64.138.004  | 32                 | 1.1/4           |
| 64.024.005       | 64.041.004 | 64.033.005 | 64.138.005  | 40                 | 1.1/2           |
| 64.024.006       | 64.041.005 | 64.033.006 | 64.138.006  | 50                 | 2               |
| 64.024.007       | 64.041.006 | -          | 64.138.007  | 65                 | 2.1/2           |
| 64.024.008       | 64.041.007 | 64.033.007 | 64.138.008  | 80                 | 3               |
| 64.024.009       | 62.000.518 | 64.033.008 | 64.138.009  | 100                | 4               |

KAMLOK SAPKA – DC-TÍPUS: ANYA CSATLAKOZÓ SAPKA  
KAMLOK DUST CAP – DC-TYPE: FEMALE ADAPTER WITH DUST CAP



| Cikkszám<br>Code |            |            |             | Méret<br>Dimension |
|------------------|------------|------------|-------------|--------------------|
| AL               | SS         | PP         | Réz / Brass | DN                 |
| 64.025.001       | 64.042.001 | 64.034.001 | 64.139.001  | 15                 |
| 64.025.002       | 64.042.002 | 64.034.002 | 64.139.002  | 20                 |
| 64.025.003       | 64.042.003 | 64.034.003 | 64.139.003  | 25                 |
| 64.025.004       | 64.042.004 | 64.034.004 | 64.139.004  | 32                 |
| 64.025.005       | 64.042.005 | 64.034.005 | 64.139.005  | 40                 |
| 64.025.006       | 64.042.006 | 64.034.006 | 64.139.006  | 50                 |
| 64.025.007       | 64.042.007 | -          | 64.139.007  | 65                 |
| 64.025.008       | 64.042.008 | 64.034.007 | 64.139.008  | 80                 |
| 64.025.009       | 62.000.519 | 64.034.008 | 64.139.009  | 100                |

KAMLOK DUGÓ – DP-TÍPUS: APA CSATLAKOZÓ DUGÓ  
KAMLOK DUST PLUG – DP-TYPE: MALE ADAPTER WITH DUST PLUG



| Cikkszám<br>Code |            |            |             | Méret<br>Dimension |
|------------------|------------|------------|-------------|--------------------|
| AL               | SS         | PP         | Réz / Brass | DN                 |
| 64.026.001       | 64.043.001 | 64.035.001 | 64.140.001  | 15                 |
| 64.026.002       | 64.043.002 | 64.035.002 | 64.140.002  | 20                 |
| 64.026.003       | 64.043.003 | 64.035.003 | 64.140.003  | 25                 |
| 64.026.004       | 64.043.004 | 64.035.004 | 64.140.004  | 32                 |
| 64.026.005       | 64.043.005 | 64.035.005 | 64.140.005  | 40                 |
| 64.026.006       | 64.043.006 | 64.035.006 | 64.140.006  | 50                 |
| 64.026.007       | 64.043.007 | -          | 64.140.007  | 65                 |
| 64.026.008       | 64.043.008 | 64.035.007 | 64.140.008  | 80                 |
| 64.026.009       | 62.000.520 | 64.035.008 | 64.140.009  | 100                |

KAMLOK TÖMÍTÉS  
KAMLOK SEALING



| Cikkszám<br>Code |            |               |            |                     | Méret<br>Dimension |
|------------------|------------|---------------|------------|---------------------|--------------------|
| EPDM             | NBR        | FKM (Viton®)  | PTFE       | Szlikon<br>Silicone | DN                 |
| Fekete / Black   |            | Fehér / White |            | Piros / Red         | DN                 |
| 64.044.001       | 64.045.001 | 62.901.001    | 62.901.010 | -                   | 15                 |
| 64.044.002       | 64.045.002 | 62.901.002    | 62.901.011 | -                   | 20                 |
| 64.044.003       | 64.045.003 | 62.901.003    | 62.901.012 | 62.901.019          | 25                 |
| 64.044.004       | 64.045.004 | 62.901.004    | 62.901.013 | 62.901.020          | 32                 |
| 64.044.005       | 64.045.005 | 62.901.005    | 62.901.014 | 62.901.021          | 40                 |
| 64.044.006       | 64.045.006 | 62.901.006    | 62.901.015 | 62.901.022          | 50                 |
| 64.044.007       | 64.045.007 | 62.901.007    | 62.901.016 | 62.901.023          | 65                 |
| 64.044.008       | 64.045.008 | 62.901.008    | 62.901.017 | 62.901.024          | 80                 |
| 64.044.009       | 64.045.009 | 62.901.009    | 62.901.018 | -                   | 100                |