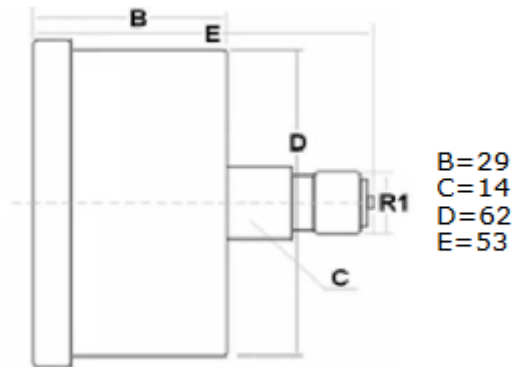


Hidraulikus mérőóra hátsó kivezetéssel
Hydraulic pressure gauge rear connection



R1	Scale (bar)
1/4" BSP	0-1
1/4" BSP	0-2.5
1/4" BSP	0-4
1/4" BSP	0-6
1/4" BSP	0-10
1/4" BSP	0-12
1/4" BSP	0-16
1/4" BSP	0-20
1/4" BSP	0-25
1/4" BSP	0-40
1/4" BSP	0-60
1/4" BSP	0-100
1/4" BSP	0-160
1/4" BSP	0-250
1/4" BSP	0-315
1/4" BSP	0-400
1/4" BSP	0-600